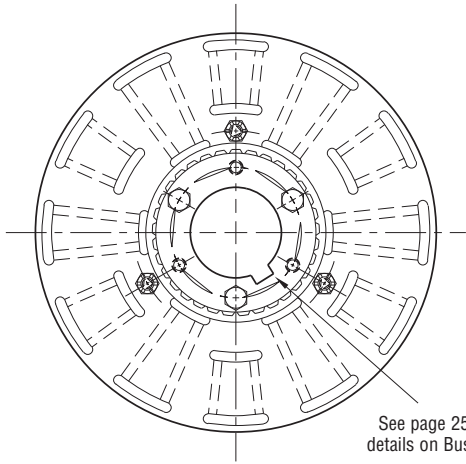


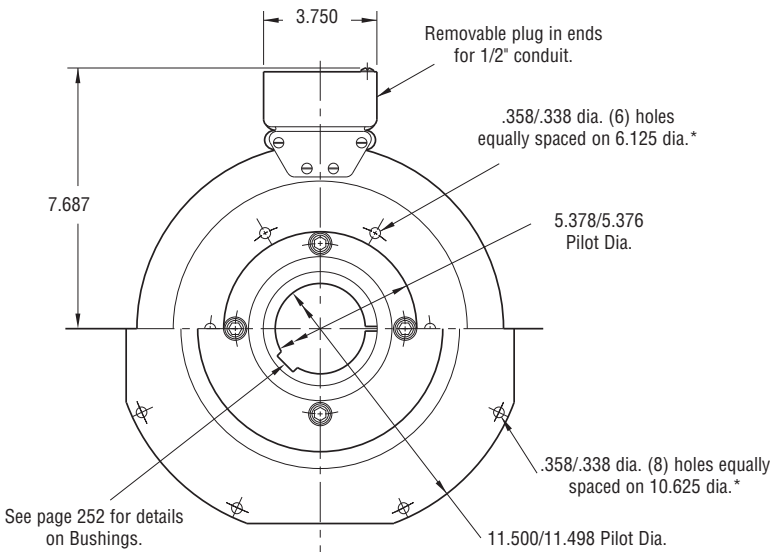
Clutch/Brake Coupling

PCBC-1000



ARMATURE VIEW

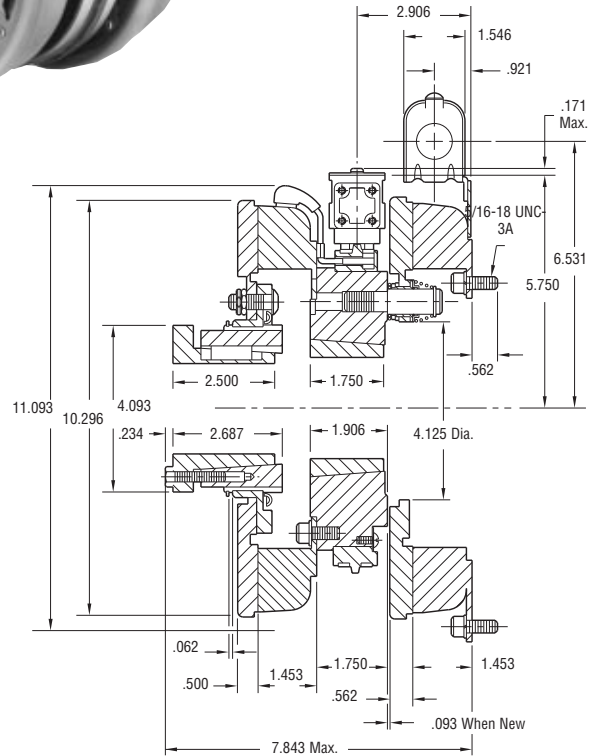
See page 252 for details on Bushings.



**MAGNET VIEW
(Inside & Outside Mounted)**

Customer Shall Maintain:

1. Armature mounting shaft concentric with magnet mounting shaft within .006 T.I.R.
2. Squareness of brake magnet mounting face with magnet mounting shaft within .006 T.I.R.
3. Concentricity of brake magnet mounting pilot diameter with magnet mounting shaft within .010 T.I.R.
4. Angular alignment of shafts within 1/2 degree.



* Mounting holes are within .010 of true position relative to pilot diameter.

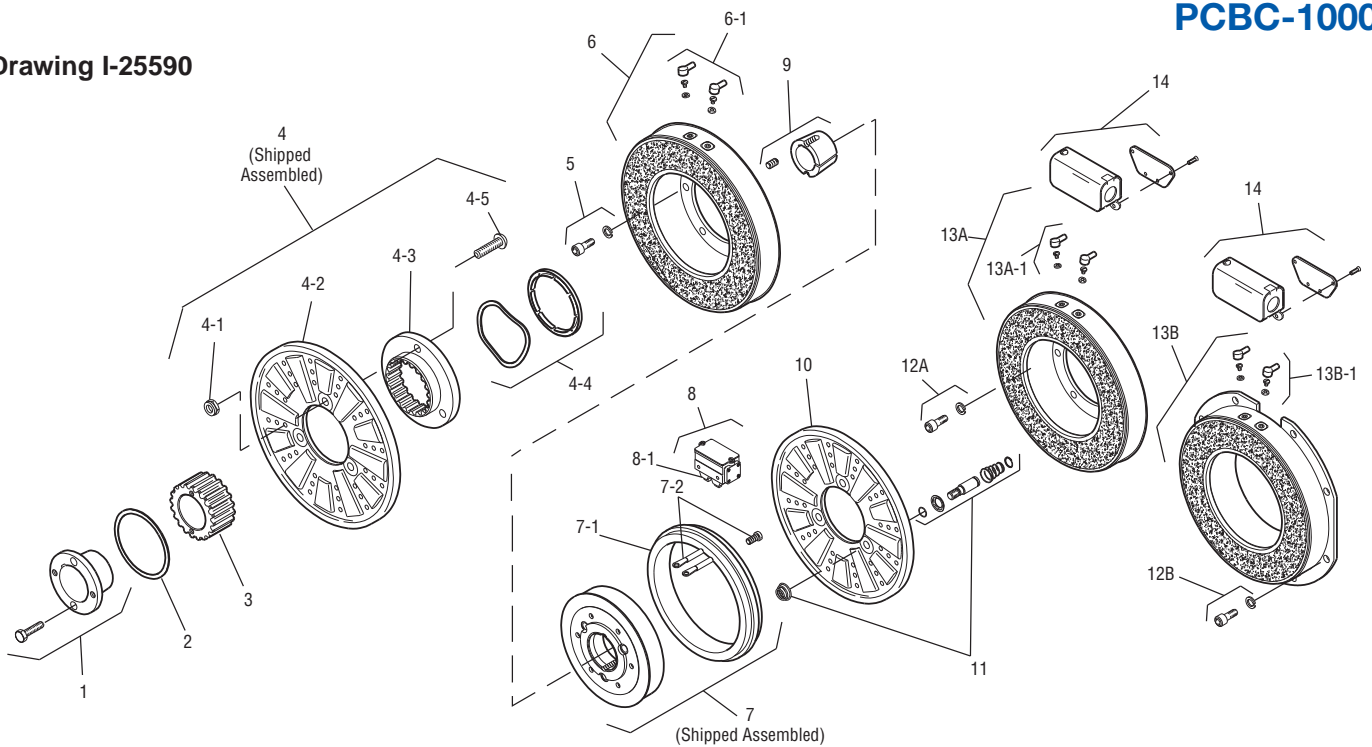
| | |
|------------------|----------------|
| Armature Shaft | .750 – 2.687 |
| Magnetic Shaft | .500 – 2.500 |
| Static Torque | 240 lb.ft. |
| Maximum Speed | 3,600 rpm |
| Standard Voltage | D.C. 6, 24, 90 |

All dimensions are nominal unless otherwise noted.

Information on inertia and weights begins on page 239. Coil data is on pages 250 and 251.



Drawing I-25590



| Item | Description | Part Number | Qty. |
|------|-----------------------------------|----------------------|------|
| 1 | Bushing* 3/4" to 2-11/16" Bore | 180-0026 to 180-0057 | 1 |
| 2 | Retainer Ring | 748-0007 | 1 |
| 3 | Splined Hub | 540-0062 | 1 |
| 4 | Armature & Splined Adapter | 5322-111-002 | 1 |
| 4-1 | Locknut | 661-0004 | 3 |
| 4-2 | Armature | 5322-111-036 | 1 |
| 4-3 | Splined Adapter | 104-0009 | 1 |
| 4-4 | Autogap Accessory | 5322-101-004 | 1 |
| 4-5 | Screw | 797-0272 | 3 |
| 5 | Mounting Accessory | 5321-101-001 | 1 |
| 6 | Magnet | | 1 |
| | 6 Volt | 5302-631-003 | |
| | 24 Volt | 5302-631-014 | |
| | 90 Volt | 5302-631-005 | |
| 6-1 | Terminal Accessory | 5311-101-001 | 1 |
| 7 | Magnet Hub | | 1 |
| | Left Hand (shown) | 5302-541-001 | |
| | Right Hand | 5302-541-002 | |
| 7-1 | Collector Ring | 5301-749-001 | 1 |
| 7-2 | Collector Ring Accessory | 5302-101-002 | 1 |
| 8 | Brushholder | 5300-178-001 | 1 |
| 8-1 | Brush | 176-0001 | 4 |
| 9 | Bushing* | | 1 |
| | 1/2" to 2-1/2" Bore | 180-0185 to 180-0217 | |
| 10 | Armature | 5302-111-013 | 1 |
| 11 | Autogap Accessory | 5201-101-008 | 3 |
| 12A | Mounting Accessory - I.M. | 5321-101-001 | 1 |
| 12B | Mounting Accessory - O.M. | 5321-101-002 | 2 |

| Item | Description | Part Number | Qty. |
|-------|--------------------------|--------------|------|
| 13A | Magnet - Inside Mounted | | 1 |
| | 6 Volt | 5312-631-004 | |
| | 24 Volt | 5312-631-005 | |
| | 90 Volt | 5312-631-006 | |
| 13A-1 | Terminal Accessory | 5311-101-001 | 1 |
| 13B | Magnet - Outside Mounted | | 1 |
| | 6 Volt | 5312-631-011 | |
| | 24 Volt | 5312-631-013 | |
| | 90 Volt | 5312-631-012 | |
| 13B-1 | Terminal Accessory | 5311-101-001 | 1 |
| 14 | Conduit Box | 5200-101-011 | 1 |

How to Order:

1. Specify Bore Size for Items 1 and 9.
2. Specify Voltage for Items 6 and 13.
3. Specify left hand or right hand hub for Item 7. Bushing enters from magnet side for L.H. hub and from hub side for R.H.
4. Specify Inside Mounted for Items 12A and 13A or Outside Mounted for Items 12B and 13B.
5. See Controls Section.

Example:

PCBC-1000 Clutch Brake Coupling per I-25590 - 90 Volt, Inside Mounted, Left Hand hub, 1-1/2" Bore, (Items 1 and 9)

These units meet the standards of UL508 and are listed under guide card #NMTR2, file #59164. These units are CSA certified under file #LR11543.

*See page 252 for specific part numbers.

Refer to Service Manual P-205.