

# Electrak PPA-AC

115 and 230 Vac - load up to 6670 N



» Ordering Key - see page 68

» Glossary - see page 72

» Electric Wiring Diagram - see page 46

## Standard Features and Benefits

- Strong and versatile heavy duty actuator
- High duty cycle
- Highly efficient ball screw drive system
- Overload clutch for mid and end of stroke protection
- Stroke lengths up to 36 inch (914,4 mm)
- Motor with thermal switch
- Integrated motor capacitor
- Maintenance free
- Large range of options

## General Specifications

Parameter	Electrak PPA-AC
Screw type	ball
Internally restrained	no
Manual override	no, optional
Dynamic braking	no
Holding brake	yes
End of stroke protection	overload clutch
Mid stroke protection	overload clutch
Motor protection	auto reset thermal switch
Motor connection	flying leads
Motor connector	no
Certificates	CE
Options	<ul style="list-style-type: none"> <li>• end of stroke limit switches</li> <li>• potentiometer</li> <li>• encoder</li> <li>• protective bellows</li> <li>• anti-coast brake</li> <li>• electrical brake *</li> </ul>

\* Only possible on 115 Vac models

## Performance Specifications

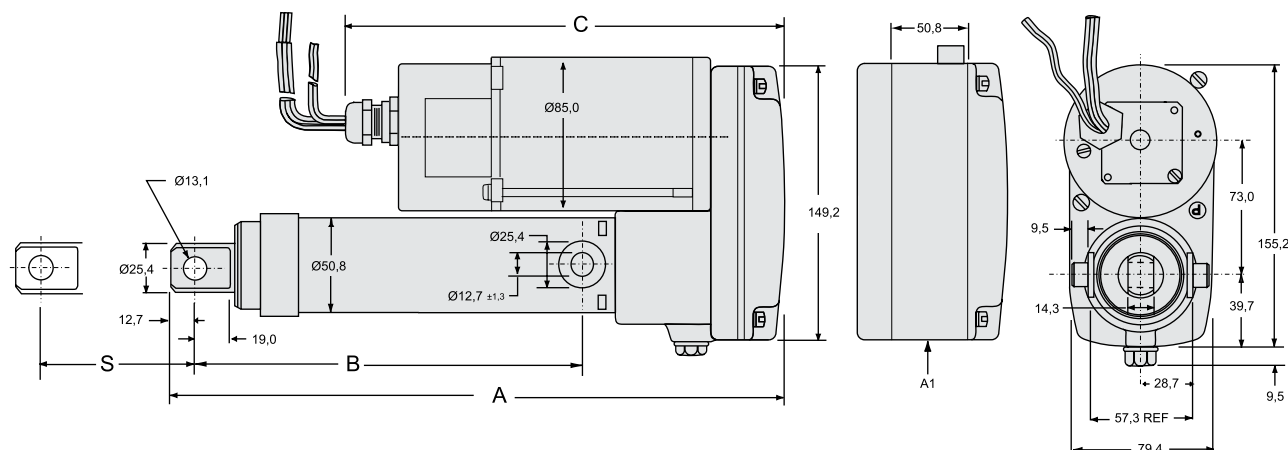
Parameter	PPA-AC
Maximum load, dynamic / static PPA •• -18B65 PPA •• -58B65	[N] 2220 / 13350 6670 / 13350
Speed, at no load / at maximum load PPA11-18B65 PPA22-18B65 PPA11-58B65 PPA22-58B65	[mm/s] 16 / 15 14 / 13 4,3 / 4,3 4,3 / 4,3
Available input voltages Single phase	[Vac] 115, 230
Input frequency 1 × 115 Vac model 1 × 230 Vac model	[Hz] 50/60 50/60
Standard stroke lengths	[inch] 4, 8, 12, 18, 24, 36
Operating temperature limits	[°C] -25 – +65
Full load duty cycle @ 25 °F	[%] 30
End play, maximum	[mm] 1,0
Restraining torque PPA •• -18B65 PPA •• -58B65	[Nm] 11,3 22,6
Lead cross section	[mm²] 0,75
Lead length	[mm] 500
Protection class	IP45

## Compatible Controls

Control model	See page
DPDT switch	48
DPDT switch box	49

# Electrak PPA-AC

115 and 230 Vac - load up to 6670 N



S: stroke

A: retracted length

B: retracted length to trunnions

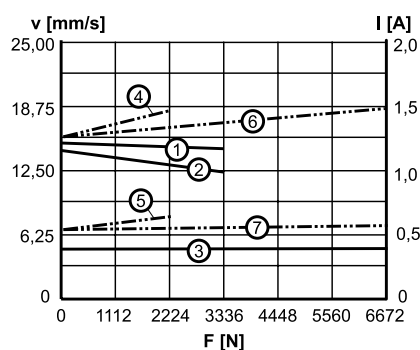
C: motor length

A1: housing dimensions for limit switch, encoder or potentiometer options

Stroke (S)	[inch (mm)]	4 (101,6)	8 (203,2)	12 (304,8)	18 (457,2)	24 (609,6)	36 (914,4)
Retracted length (A) without options	[mm]	348,0	449,6	551,2	754,4	906,8	1211,6
Retracted length (A) with limit switch, encoder or potentiometer	[mm]	398,8	500,4	602,0	805,2	957,6	1262,4
Retracted length (B)	[mm]	223,5	352,1	426,7	629,9	782,3	1087,1
Motor length (C) without electrical brake	[mm]	213,6	213,6	213,6	213,6	213,6	213,6
Motor length (C) with electrical brake	[mm]	277,4	277,4	277,4	277,4	277,4	277,4
Weight	[kg]	6,0	6,7	7,5	8,7	9,8	12,2
Weight with electrical brake	[kg]	6,6	7,3	8,1	9,3	10,4	12,9
Add on weight for limit switch, encoder or potentiometer	[kg]	0,8	0,8	0,8	0,8	0,8	0,8

## Performance Diagrams

Speed and Current vs. Load



V: speed I: current F: load

1: speed 115 Vac, PPA11-18B65

2: speed 230 Vac, PPA22-18B65

3: speed 115 Vac, PPA11-58B65 and 230 Vac, PPA22-58B65

4: current 115 Vac, PPA11-18B65

5: current 230 Vac, PPA22-18B65

6: current 115 Vac, PPA11-58B65

7: current 230 Vac, PPA22-58B65