

Packaged Stationary Field Clutches

Specifications

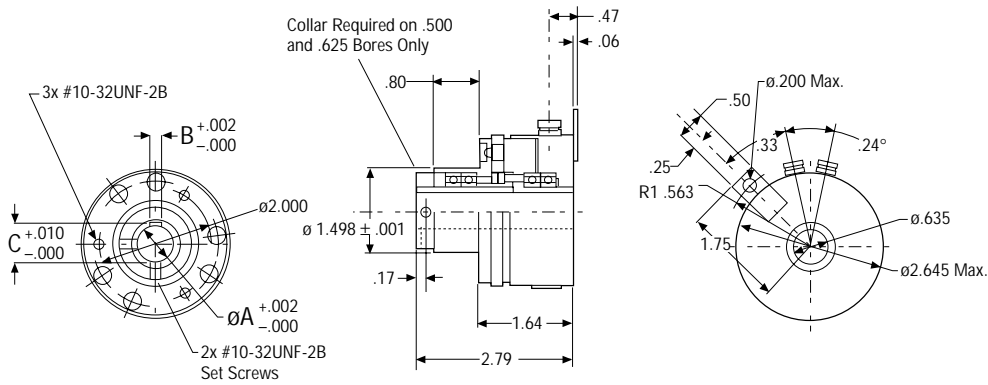
Model	Static Torque	Max.RPM
SFP-250	70 in.lb.	7500
SFP-400	270 in.lb.	5000

How to Order

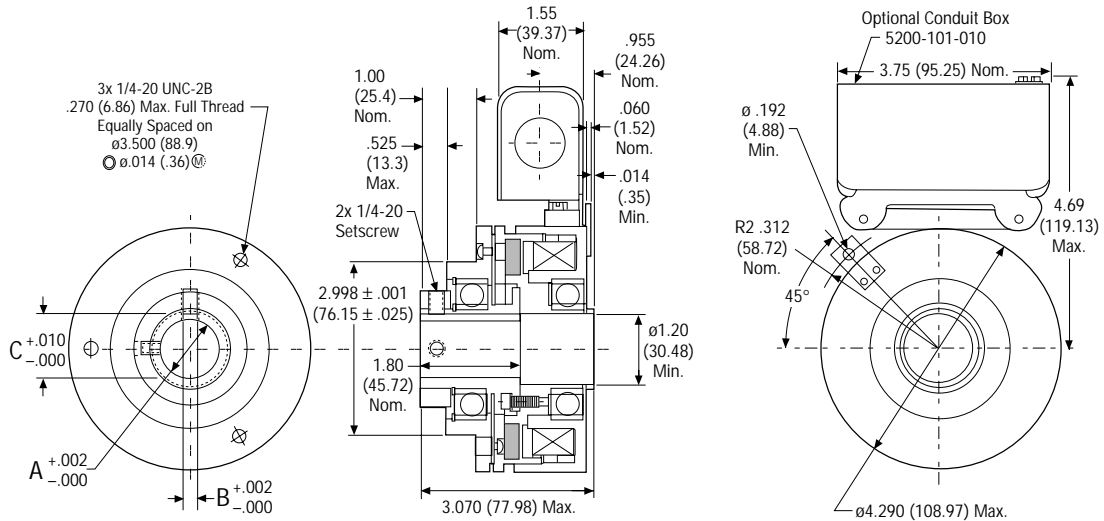
1. Select the proper size from the chart (right).
2. Select the bore size and voltage.
3. Find the corresponding part number from the table below.
4. Select a Warner Electric Control if appropriate.

HP	SHAFT SPEED AT CLUTCH (IN RPM)																					
	100	200	300	400	500	600	700	800	900	1000	1100	1200	1500	1800	2000	2400	3000	3600	4000	4600	5000	
1/50																						
1/20																						
1/12																						
1/8											250											
1/6																						
1/4																						
1/3																						
1/2																						
3/4										400												
1																						
1-1/2																						
2																						
3																						

SFP-250



SFP-400



Tolerances

Model No.	A Bore	Keyway		Part Number		
		B	C	6V	24V	90V
SFP-250	.375"	.0948	.421	5103-271-002	5103-271-006	5103-271-010
	.438"	.126	.479	5103-271-003	5103-271-007	5103-271-011
	.500"	.126	.560	5103-271-004	5103-271-008	5103-271-012
SFP-400	.5005"	.125	.560	5104-271-006	5104-271-016	5104-271-021
	.6255"	.1875	.709	5104-271-007	5104-271-017	5104-271-022
	.7505"	.1875	.837	5104-271-008	5104-271-018	5104-271-023
	.8755"	.1875	.964	5104-271-009	5104-271-019	5104-271-024
	1.0005"	.1875	1.090	5104-271-010	5104-271-020	5104-271-025