

GEARBOXES

HYDRO-MEC

Cast iron single stage gearboxes



SIZE	OUTPUT TORQUE	OUTPUT SHAFT
501C	225 Nm	ø30
701C	380 Nm	ø35
801C	670 Nm	ø40
851C	700 Nm	ø50
901C	1175 Nm	ø60

Cast iron coaxial gearboxes



SIZE	OUTPUT TORQUE	OUTPUT SHAFT
502/3C	320 Nm	ø30
702/3C	675 Nm	ø35
802/3C	900 Nm	ø40
852/3C	1800 Nm	ø50
902/3C	2100 Nm	ø60

Shaft Mounted Gearboxes



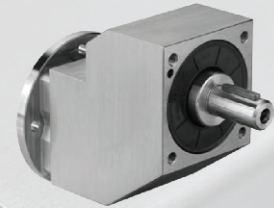
SIZE	OUTPUT TORQUE	OUTPUT SHAFT
FA41/2/3	320 Nm	ø30
FAS2/3	510 Nm	ø35
FC61/2/3	675 Nm	ø35
FC71/2/3	900 Nm	ø40
FC81/2/3	2100 Nm	ø50

Stainless steel worm gearboxes



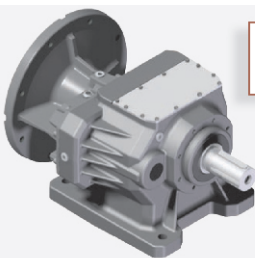
SIZE	OUTPUT TORQUE	OUTPUT SHAFT
130	21 Nm	ø14
145	41 Nm	ø18
150	72 Nm	ø25
163	147 Nm	ø25
185	347 Nm	ø35
111	651 Nm	ø42

Stainless steel single stage gearboxes



SIZE	OUTPUT TORQUE	OUTPUT SHAFT
4111	38 Nm	ø19

Cast iron coaxial gearboxes



New

SIZE	OUTPUT TORQUE	OUTPUT SHAFT
1002/3C	3000 Nm	ø60
1102/3C	4600 Nm	ø70

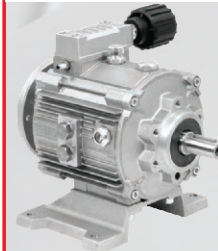
Stainless steel motors



Specials



Atex speed variator



0 - 1450 rpm with adjustable torque limiting system included.

0 - 1450 rpm Con controllo coppia integrato regolabile

SIZE	POWER
K2	0.37 - 075 kW
K4	1.1 - 1.5 kW
K5	2.2 - 3 - 4 kW