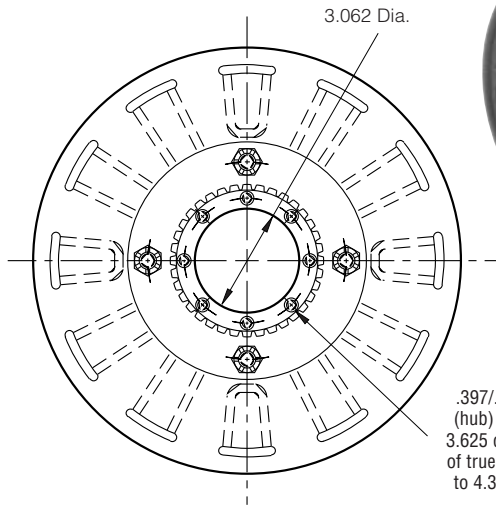
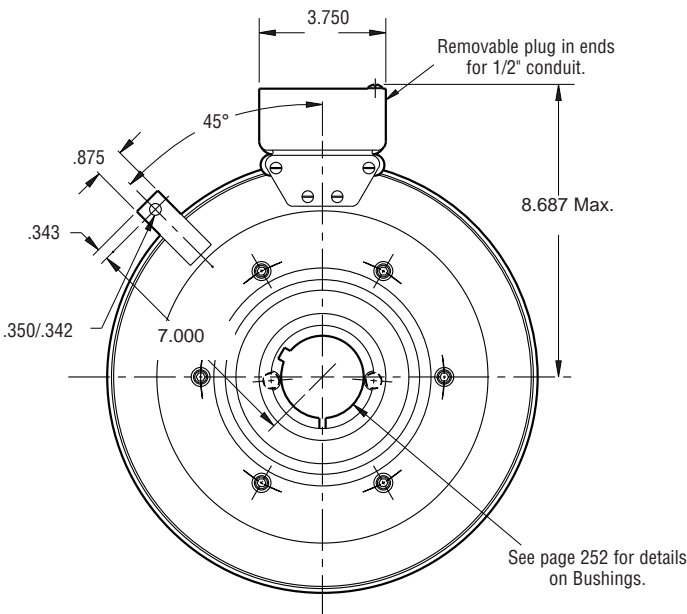


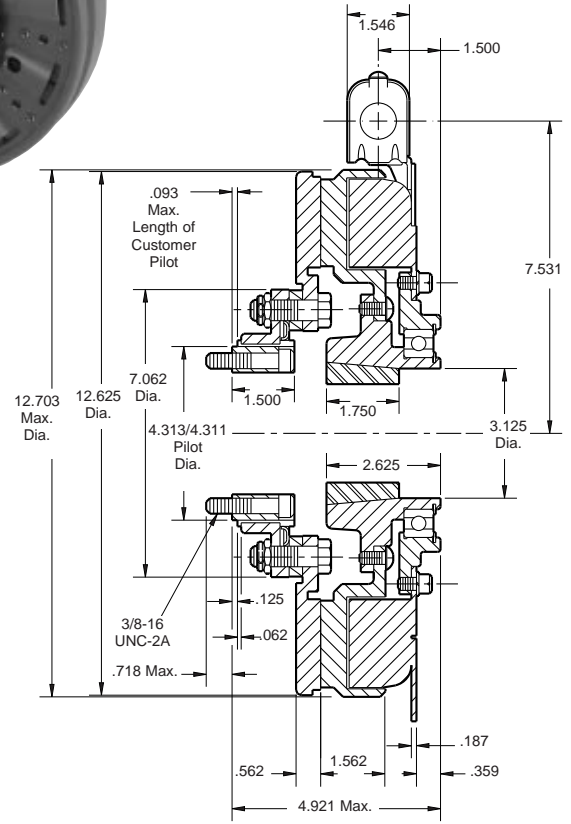
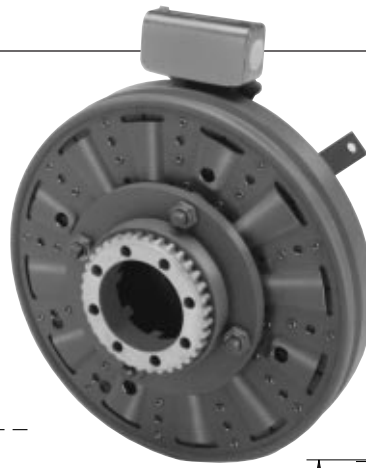
SF-1225 Bearing Mounted



ARMATURE VIEW



FIELD VIEW



| | |
|------------------|----------------|
| Shaft Size | .500 – 2.500 |
| Static Torque | 465 lb.ft. |
| Maximum Speed | 2,200 rpm |
| Standard Voltage | D.C. 6, 24, 90 |

All dimensions are nominal unless otherwise noted.

Information on inertia and weights begins on page 239. Coil data is on pages 250 and 251.

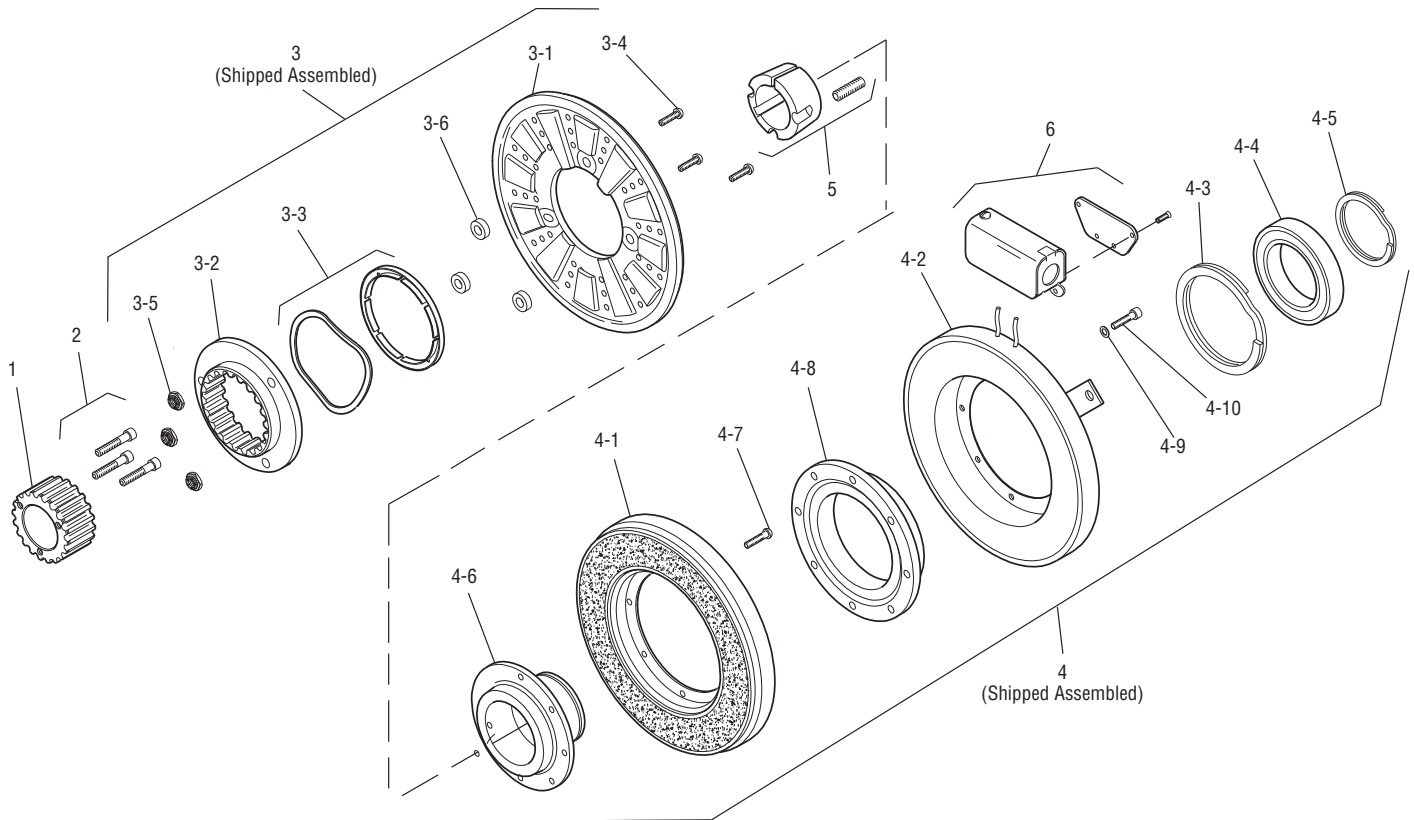
Customer Shall Maintain:

1. Armature hub pilot diameter to be concentric with field and rotor mounting shaft within .010 T.I.R.



SF-1225 Bearing Mounted

Drawing I-25622



| Item | Description | Part Number | Qty. |
|------|-----------------------------|--------------|------|
| 1 | Splined Hub | 540-0148 | 1 |
| 2 | Accessory Mounting | 5202-101-001 | 1 |
| 3 | Armature & Adapter Assembly | 5203-111-001 | 1 |
| 3-1 | Armature | 5323-111-034 | 1 |
| 3-2 | Splined Adapter | 104-0010 | 1 |
| 3-3 | Autogap Accessory | 5323-101-002 | 1 |
| 3-4 | Screw | 797-0356 | 4 |
| 3-5 | Locknut | 661-0005 | 4 |
| 3-6 | Spacer | 266-0004 | 4 |
| 4 | Field & Rotor Assembly | | 1 |
| | 6 Volt | 5203-452-009 | |
| | 24 Volt | 5203-452-011 | |
| | 90 Volt | 5203-452-012 | 1 |
| 4-1 | Rotor | | 1 |
| | Standard Friction Material | 5203-751-001 | |
| | †Optional LK Facing | 5203-751-004 | |
| 4-2 | Field | | 1 |
| | 6 Volt | 5203-451-034 | |
| | 24 Volt | 5203-451-036 | |
| | 90 Volt | 5203-451-037 | |
| 4-3 | Retainer Ring | 748-0119 | 1 |
| 4-4 | Ball Bearing | 166-1047 | 1 |

| Item | Description | Part Number | Qty. |
|------|------------------|----------------------|------|
| 4-5 | Retainer Ring | 748-0011 | 1 |
| 4-6 | Rotor Hub | 540-1304 | 1 |
| 4-7 | Buttonhead Screw | 797-1261 | 8 |
| 4-8 | Ring Adapter | 748-0591 | 1 |
| 4-9 | Lockwasher | 950-0359 | 6 |
| 4-10 | Sockethead Screw | 797-0424 | 6 |
| 5 | Bushing* | 180-0185 to 180-0217 | 1 |
| 6 | Conduit Box | 5200-101-012 | 1 |

How to Order:

1. Specify Bore Size for Item 5.
2. Specify Voltage for Item 4.
3. See Controls Section.

Example:

SF-1225 Clutch per I-25622 - 90 Volt, 1" Bore

These units, when used in conjunction with the correct Warner Electric conduit box, meet the standards of UL508 and are listed under guide card #NMTR, file #59164. These units are CSA certified under file #LR11543.

*See page 252 for specific part numbers.

Refer to Service Manual P-215.

†Optional LK facing available. For more information, see page 232.